



**A PROFESSIONAL COMPANY WITH A COMPLETE INDUSTRIAL CHAIN OF  
ADBLUE/DEF/AUS32/Arla32/AUS40  
IN CHINA**

**Smart Supply Chain**  
斯码特供应链

*"We deliver not only your goods, but also your hopes and dreams!"*

## ABOUT US

We are "Shenzhen SMART Supply Chain Ltd.", a legal company in Hong Kong SAR and Shenzhen, China.

We are an enterprise specializing in the production and sales of AdBlue/DEF/AUS32/Arla32, AUS40 and Automotive Grade Urea in China. Our annual production capacity is 1 million tons at least. We have successfully passed the certification of the VDA, REACH, API, ISO9001, ISO14001, ISO22241, GB/T29490, TS16949..., Our products are exported to the EU, US, South Africa, South Korea and Japan...

We have a complete industrial chain of AdBlue/DEF/AUS32/AUS40, from

1. **RAW MATERIALS** (Prilled Urea/TGU/AGU) to
2. **PRODUCTION** (Production Line and Equipment) to
3. **DELIVERY** (End Products 10L/20L/200L/1000L/Bulk and Anti-Crystallization Additive/RO Anti-Scalants) and
4. **DISPENSER** (Portable, Hanging, Stand, Fleet and Fuel Station Solution).

In addition, We also produce high quality and low price **Coolant, Antifreeze, Lubricants, Brake Fluid and Windshield Washer Fluid...**

Your inquiries are warmly welcome.

Sincerely yours,

Rock SHI

**Shenzhen SMART Supply Chain Ltd. (Mainland China)**

**China SMART Supply Chain Ltd. (Hong Kong SAR)**

Cell Phone/WeChat/WhatsApp: +86 137 1445 5119

Email: [rock.shi@56smart.cn](mailto:rock.shi@56smart.cn) | [sales@adblue.cn](mailto:sales@adblue.cn)

Website: [www.smartsupplychain.cn](http://www.smartsupplychain.cn) | [www.adblue.cn](http://www.adblue.cn)

Address: Room 503, Haibin Commercial Center, Nanshan District, Shenzhen China



"We deliver not only your goods, but also your hopes and dreams!"



## RAW MATERIALS

We provide you high-quality of Prilled Urea for making AdBlue/DEF/AUS32/AUS40 from China.

### 1. Product Name

Prilled Urea/Automotive Grade Urea (AGU)/ Technical Grade Urea (TGU)



One 20ft container can hold up to 20 tons, and one 40ft container can hold up to 26 tons.

## 2. Specification

Certificate of Analysis				
Batch NO.	20230825	Product Name	Industrial grade prilled urea	
Sample Receiving Date	2023.08.27	Detecting Date	2023.08.27	
Item	Unit	ISO limits		Results
		Min.	Max.	
Urea content	%m/m	97.8	-	99.2
Particle size	mm	0.85	2.80 (90%min)	95%
Moisture	wt %	-	0.5	0.34
Nitrogen	wt %	46	-	46.5
Alkalinity as NH3	wt %	-	0.2max	0.01
Biuret	mg/kg	-	1	0.98
Aldehydes	mg/kg	-	15.4	<3.5
Insoluble matter	mg/kg	-	61.5	5.69
Phosphate	mg/kg	-	1.5	<0.15
Calcium	mg/kg	-	1.5	<0.30
Iron	mg/kg	-	1.5	<0.30
Copper	mg/kg	-	0.6	<0.30

Zinc	mg/kg	-	0.6	<0.30
Chromium	mg/kg	-	0.6	<0.30
Nickel	mg/kg	-	0.6	<0.30
Aluminum	mg/kg	-	1.5	<0.30
Magnesium	mg/kg	-	1.5	<0.30
Sodium	mg/kg	-	1.5	<0.30
Potassium	mg/kg	-	1.5	<0.30



## PRODUCTION

A complete AdBlue/DEF/AUS32/AUS40 production line includes but is not limited to the following equipment:

1. Water purification equipment
2. Dispersed heated emulsification reaction tank
3. Automatic feeding machine
4. Fully automatic filling line
5. Automatic capping machine
6. Automatic inkjet printer
7. Automatic labeling machine.

We have two machines for you to choose from:

1. Integrated Smart AdBlue Production Facility (All-In-One)
2. Smart AdBlue Production Line (Split Machine)





## ➤ Integrated Smart AdBlue Production Facility (All-In-One)

### 1. Overview





## 2. Advantages Of Equipment

- **Advanced manufacturing technology**

All equipment parts adopts international top brands such as Dow membrane, Nanfang pump etc. The equipment operates stably and long-lasting. The harsh factory test conditions, strict calibration process of the metering sensors ensures high accuracy, high safety and stability.

- **Advanced ultrapure water process**

Above 10 grade filtration and electro deionization membrane stack process, make the de metallization ionization of pure water is up to 99999%, ensures the cleanliness and non metallization of urea solution.

The on-line after-sales service platform updates the replacement of filter element and filter screen in real time, ensures stable operation, and long-term stability of ultra pure water quality.

- **Advanced IOT technology**

Real-time Sensor monitoring is adopted to ensure the lowest faults rate of equipment. Real-time failure analysis in the background, consumables replacement reminder, quality sensor monitoring of urea solution, active early warning and telephone reminder of background professional customer service, guarantees the quality of urea solution.

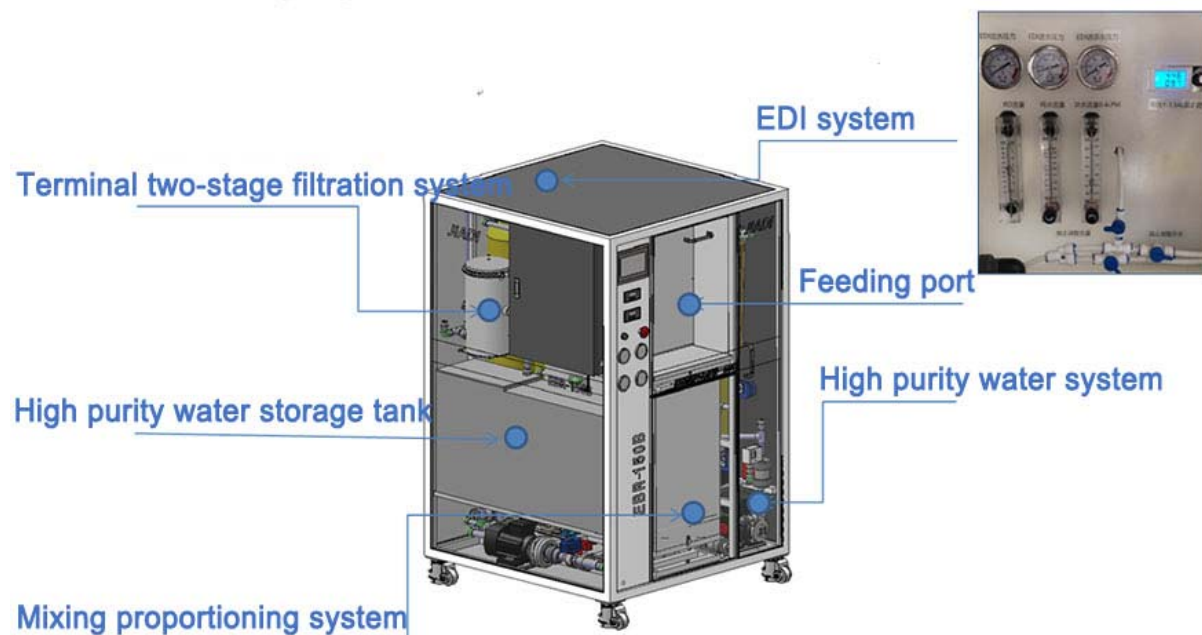
- **High precision urea solution production**

Automatic proportioning technology, extremely high-precision sensor technology, automatic adjustment of product quality, and early -fault - warning system are adopted to ensure the quality of urea solution.

- **Experienced after-sales team and standardized service process**

We provide customers full process after-sales service support. Professional technical engineers support and fast respond to customers requests.

### 3. Equipment Composition



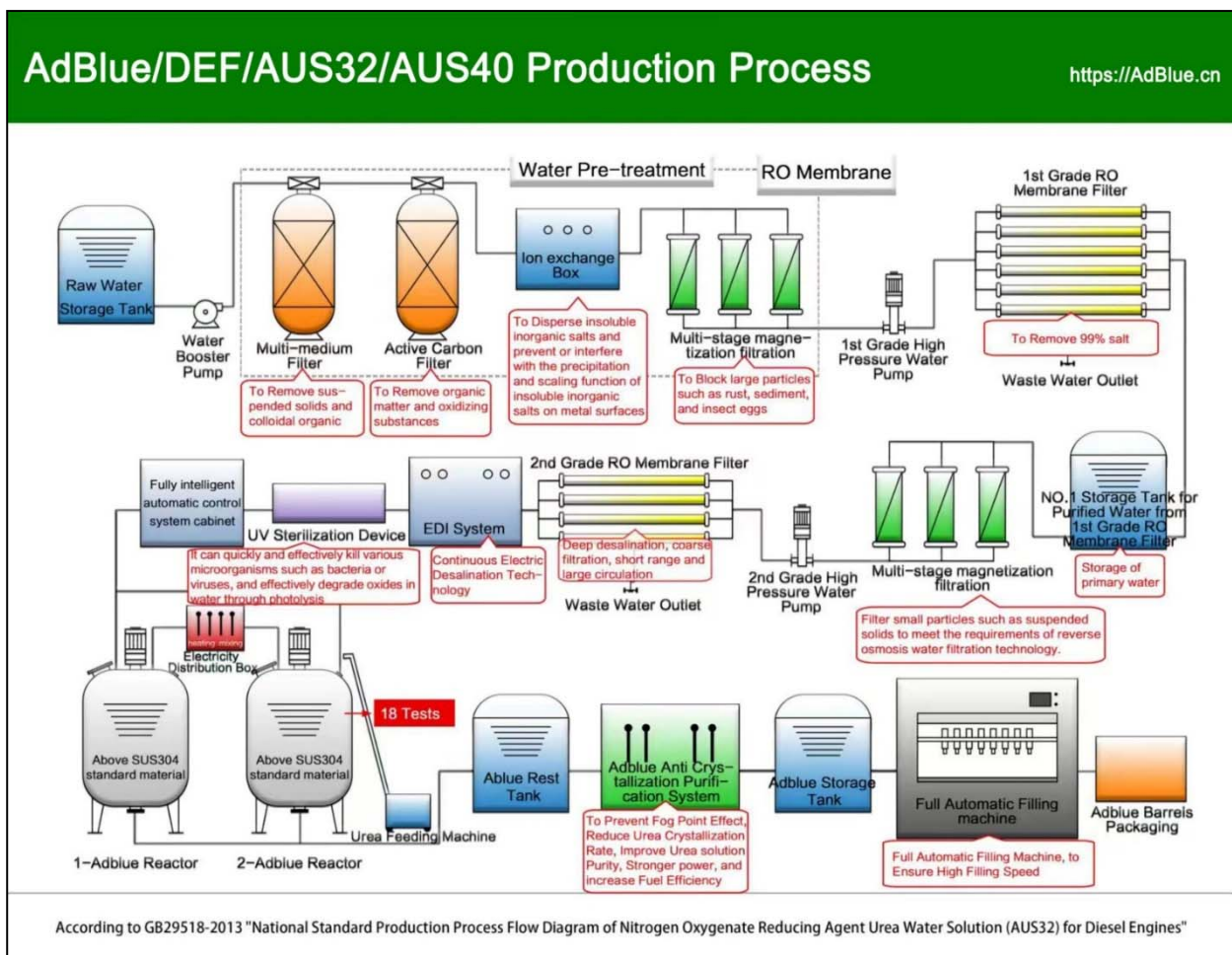
Optional: Automatic Feeding System, Ultra Purification System, Bottling System

#### 4. Product List

Model No.	Capacity	Configuration
SMT50	150Kg/Hour - 300Kg/Hour	Filter element + RO + Resin
SMT150	400Kg/Hour - 500Kg/Hour	Filter element + Two-stage RO + Resin
SMT150E	400Kg/Hour - 500Kg/Hour (EDI)	Filter element + Two-stage RO + EDI
SMT300	750Kg/Hour - 1000Kg/Hour (EDI)	Filter element + Two-stage RO + EDI
Automatic feeding machine		IoT Technology
Automatic handheld filling machine		IoT Technology



## ➤ Smart AdBlue Production Line (Split Machine)





## 1. Capacity 300Kg/Hour

**42800标准化尿素溶液套餐 (WED-NS-H5)国VI标准**



国VI标准超纯水一体机: 1台

恒温双系统搅拌反应釜: 1套

小型自动尿素专用灌装机: 1台

打码机

封口机

尿素检测仪

深圳市斯码特供应链有限公司 (SMART SUPPLY CHAIN LTD.), 是一家生产环保类汽车用品的专业厂家, 主要生产车用尿素溶液、汽车防冻液、玻璃水、洗车液、轮胎蜡、洗车蜡水和洗化用品等。本公司前身专业生产汽车用品和洗化用品已达16年之久, 2002年公司以个体形式进入市场, 主要以做OEM为主, 2010公司为更好地服务市场, 成立技术研发部、销售部、市场部等, 着重打造一条龙服务性质公司, 为客户更好地提供专业的销售与售后服务。

人工: 2-3人; 功率: 15Kw ;  
占地面积: 20-40平方米。以上设备价格不含运费不含税。

## 2. Capacity 300Kg/Hour

**50800标准化尿素溶液套餐 (WED-NS-H5)国VI标准**



**超纯水一体机: 1台**

**恒温双系统搅拌反应釜: 1套**

**小型自动尿素专用灌装机: 1台**

**打码机**

**封口机**

**冰点仪**

**酒精计**

**沸点仪**

**尿素检测仪**

深圳市斯码特供应链有限公司 (SMART SUPPLY CHAIN LTD.), 是一家生产环保类汽车用品的专业厂家, 主要生产车用尿素溶液、汽车防冻液、玻璃水、洗车液、轮胎蜡、洗车蜡水和洗化用品等。本公司前身专业生产汽车用品和洗化用品已达16年之久, 2002年公司以个体形式进入市场, 主要以做OEM为主, 2010公司为更好地服务市场, 成立技术研发部、销售部、市场部等, 着重打造一条龙服务性质公司, 为客户更好地提供专业的销售与售后服务。

人工: 2-3人; 功率: 15Kw;  
占地面积: 20-40平方米。以上设备价格不含运费不含税。





### 3. Capacity 600Kg/Hour

**68800标准化尿素溶液套餐 (WED-NS-H5) 国VI标准**

**全智能超纯水一体机: 1套**

**恒温双系统搅拌反应釜: 1套**

**小型自动尿素专用灌装机: 1台**

**打码机**

**封口机**

**冰点仪**

**酒精计**

**沸点仪**

**尿素检测仪**

深圳市斯码特供应链有限公司 (SMART SUPPLY CHAIN LTD.), 是一家生产环保类汽车用品的专业厂家, 主要生产车用尿素溶液、汽车防冻液、玻璃水、洗车液、轮胎蜡、洗车蜡水和洗化用品等。本公司前身专业生产汽车用品和洗化用品已达16年之久, 2002年公司以个体形式进入市场, 主要以做OEM为主, 2010公司为更好地服务市场, 成立技术研发部、销售部、市场部等, 着重打造一条龙服务性质公司, 为客户更好地提供专业的销售与售后服务。

人工: 2-3人; 功率: 15Kw;  
占地面积: 20-40平方米。以上设备价格不含运费不含税。



## ➤ Accessories and Kits

### Water Purification Equipment



Multi-medium Filter, Active Carbon Filter, Multi-stage Magnetized Filter  
Two-stage RO + EDI

### Dispersed Heated Emulsification Reaction Tank



Automatic heating reaction kettle  
Rotating speed 1000 rpm

### Vibratory Crusher Machine



Urea raw materials agglomerate due to moisture

### Jumbo Bag Unpacker and Shredder Machine



Jumbo bag unpacker and  
urea raw materials agglomerate due to moisture

### Automatic Feeding Machine



304 stainless steel feeding machine can feed industrial pellets

### Fully Automatic Filling Line



Filling range 500-5000ml

Filling accuracy  $\pm 1.5\text{ml}/500\text{ml}$

Approximately 800-1,000 bottles per hour

### Automatic Inkjet Printer



The speed can reach 75 meters/minute, the maximum printing speed is 12.7mm, and the maximum resolution is 600DPI. It can print metal, plastic, wood, aluminum foil, cartons, etc.

### Automatic Labeling Machine



Cans Length : 50mm - 300mm

Cans Width : 50mm - 220mm

Cans Height : 80mm - 400mm

Label Length : 40mm - 285mm

Label Width : 40mm - 200mm

Labeling speed: 20 - 30 pieces / minute

## ➤ Success Case

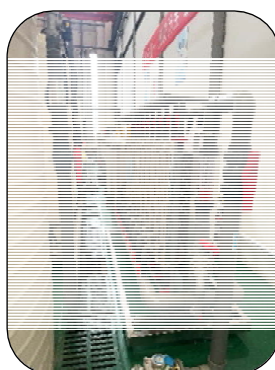




## DELIVERY

We're an enterprise specializing in the production and sales of AdBlue/DEF/AUS32/AUS40 in China, Our annual production capacity is 1 million tons at least, We have successfully passed the certification of the VDA, REACH, API, ISO9001, ISO14001, ISO22241, GB/T29490, TS16949..., Our products are exported to the EU, US, South Africa, South Korea and Japan...

We can guarantee that our quality is definitely the best, we use the two technologies of "Ultrapure filtration system" and "Nanoemulsion" to effectively remove crystal scaling inducers and reduce the content of metal ions, so that the purity of AdBlue/AUS32/AUS40 produced by us is higher, and the crystallization blockage of the SCR system is reduced. Because of the high-quality AdBlue/AUS32/AUS40 we produce, we have also become the OEM of many well-known brands, the technology and equipment in those photos below are our own patents and plant:



### ➤ AdBlue, DEF, AUS32

## 1. Packaging

- 1) Flexi tank bulk, one 20ft container can hold up to 23 tons.



- 2) 1,000L IBC tank, one 20ft container can hold up to 20 tanks, and one 40ft container can hold up to 26 tanks.





3) 10L, one 20ft container can hold up to 1,700 bottles (No pallet) and 1,300 bottles (With pallet).



4) 20L, one 20ft container can hold up to 800 bottles (No pallet) and 630 bottles (With pallet).



## 2. Specification

Certificate of Analysis					
Product Name: AdBlue Solution			Sampling Site: L01#		
Batch No.: NW230508			Quantity: 105000KGS		
Manufacture Date: May 08 2023			Detecting date: May 08 2023		
Item	Methods/Standard	Unit	Limit		Result
			Min	Max	
Urea content	ISO22241-2 Annex C	%(m/m)	31.8	33.2	32.5
Density at 20℃	ISO12185	Kg/m <sup>3</sup>	1087	1093	1090
Refractive index at 20℃	ISO22241-2 Annex C		1.3814	1.3843	1.3829
Alkalinity as NH3	ISO22241-2 Annex D	%(m/m)	--	0.2	0.01
Biuret	ISO22241-2 Annex E	%(m/m)	--	0.3	0.26
Aldehydes	ISO22241-2 Annex F	mg/kg	--	5	0.5
Insoluble matter	ISO22241-2 Annex G	mg/kg	--	20	1
Phosphate PO4	ISO22241-2 Annex H	mg/kg	--	0.5	0.05
Calcium	ISO22241-2 Annex I	mg/kg	--	0.5	0.02
Iron	ISO22241-2 Annex I	mg/kg	--	0.5	0.01
Copper	ISO22241-2 Annex I	mg/kg	--	0.2	0.01
Zinc	ISO22241-2 Annex I	mg/kg	--	0.2	0.04
Chromium	ISO22241-2 Annex I	mg/kg	--	0.2	0.01

Nickel	ISO22241-2 Annex I	mg/kg	--	0.2	0.01
Aluminum	ISO22241-2 Annex I	mg/kg	--	0.5	0.01
Magnesium	ISO22241-2 Annex I	mg/kg	--	0.5	0.01
Sodium	ISO22241-2 Annex I	mg/kg	--	0.5	0.22
Potassium	ISO22241-2 Annex I	mg/kg	--	0.5	0.1
Conclusion: the quality of urea solution meet the standard of AdBlue, is better than ISO022241 standard specification					

## ➤ AUS40, Marine Urea Solution

We produce and deliver AUS40 to any port in China or any safe port in the world.

In China, this is no problem for us, and is also what we are good at, the loading capacity of this liquid tank truck is 33 tons.

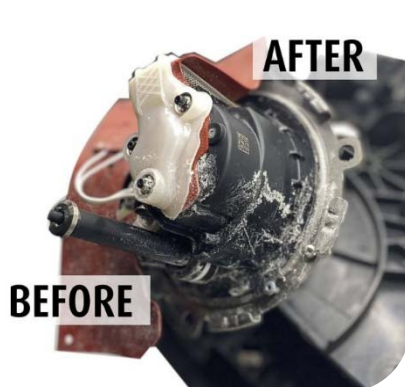
If you have any customers in China need the AUS40, we can do it on your behalf.



## ➤ AdBlue Anticrystallization Additive

### 1. Properties

- 1) Prevents the formation of crystals on components in the AdBlue system.
- 2) Delivers a cleaning effect on all components in the SCR System by dissolving light crystallization in the AdBlue Tank, pump unit & Injector.
- 3) Improves SCR/AdBlue operation.
- 4) Avoids costly repairs to the SCR/AdBlue System.
- 5) Eliminates breakdown & downtime due to AdBlue crystallization.
- 6) Prolongs the life of components in the AdBlue system.



## 2. Packaging

### 1) 300ML, 24 bottles per box



### 2) 20L and 1000L IBC





## ➤ RO Antiscalants

### 1. Prevention of Scale Formation:

- 1) Inhibition of Inorganic Salt Deposition: RO antiscalants prevent the precipitation and crystallization of inorganic salts such as calcium carbonate, calcium sulfate, barium sulfate, strontium sulfate, and calcium fluoride.
- 2) Reduction of Silica Scaling: They inhibit the deposition of silica, which can be particularly challenging to control.
- 3) Control of Metal Oxide Fouling: RO antiscalants also prevent the deposition of metal oxides like iron, aluminum, and manganese, which can form scale on the membrane surface.



### 2. Improving System Efficiency:

- 1) Maintaining High Permeate Flow: By preventing scaling, antiscalants help maintain high water permeability through the RO membranes.

- 2) Ensuring High Salt Rejection: They help in preserving the membrane's salt rejection capabilities by keeping the membrane surface clean.

### 3. Extending Membrane Life:

- 1) Reducing Cleaning Frequency: With less scaling and fouling, the need for frequent chemical cleaning is reduced, which in turn extends the life of the membranes.
- 2) Protecting Membrane Integrity: By minimizing scale formation, the structural integrity of the membranes is preserved, preventing damage that can occur from aggressive cleaning.

### 4. Lowering Operational Costs:

- 1) Reducing Energy Consumption: Clean membranes operate more efficiently, requiring less energy to achieve the desired permeate flow and quality.
- 2) Minimizing Maintenance and Downtime: By preventing scale buildup, the frequency of maintenance and associated downtime is reduced, leading to lower operational costs.

### 5. Compatibility with Various Water Types:

- 1) Adaptable to Different Feed Waters: RO antiscalants are formulated to be effective with a wide range of feed water conditions, including high hardness, high alkalinity, high sulfate, and high silica waters.

### 6. Environmentally Friendly:

- 1) Safe Formulations: Most RO antiscalants are designed to be environmentally friendly, ensuring they are safe to use and dispose of, with minimal environmental impact.



## ➤ Coolant, Antifreeze, Brake Fluid

### 1. Coolant and Antifreeze:

- 1) Coolant is a fluid used in the radiator to remove the engine's heat.
- 2) Antifreeze is an additive mixed with water or coolant to prevent your car engine from freezing in cold weather.



### 2. Brake Fluid:

Brake fluid is a type of hydraulic fluid used in hydraulic braking systems to transfer force into pressure, bringing the vehicle to a complete stop when the brakes are pushed in.



## DISPENSER

We have a variety of AdBlue Dispenser, and can also customize production according to your requirements.

### AdBlue Dispenser for IBC



Flow range: 35L/min

Work pressure: 1.6 Bar

Motor speed: 1750 rpm

Power: 220V/230V

EPDM hose, in 2m and out 4m, all are made of stainless steel

### AdBlue Dispenser for Drums



Flow range: 14L/min

Out hose: 2m

Power: 12V DC/220V/230V AC

Suitable for: AdBlue, water, antifreeze, washer fluid, mild cleaning agents  
and mild herbicide

### Stand AdBlue Dispenser



Flow range: 35L/min

In hose: 1m

Out hose: 10m

Power: 12V DC/220V/230V AC

Quantitative, fixed filling, QR code and Card payment

### Hanging AdBlue Dispenser



Flow range: 35L/min

In hose: 1m

Out hose: 10m

Power: 12V DC/220V/230V AC

Quantitative, fixed filling, QR code and Card payment

### Stand AdBlue Dispenser



Size: 1500\*500\*400(mm)

Booster pump pressure: 1.5Mpa

Voltage: AC (110V/220V/230V), DC12v, 24v

Flow rate: 35L to 50L

Pressure: 25PSI

Medium temperature: ≤60 degrees

Inlet and outlet diameter: 1 inch (32mm)

Transmission medium: automotive urea, water, diesel, engine oil, etc.

### Hanging AdBlue Dispenser



Size: 500\*500\*400(mm)

Booster pump pressure: 1.5Mpa

Voltage: AC (110V/220V/230V), DC12v, 24v

Flow rate: 35L to 50L

Pressure: 25PSI

Medium temperature: ≤60 degrees

Inlet and outlet diameter: 1 inch (32mm)

Transmission medium: automotive urea, water, diesel, engine oil, etc.

### AdBlue Dispenser for Fleet Solution



自封枪一把



进管1.2米 出管12米  
配件若干



高1.9米 宽1.56米 纵深1.44米

Product range: 1 / 2 / 3 / 5 / 10 tons

Power: 220V/230V, 370W

Flow range: 6m3/h, Hose in 1.5m and out 12m

Size: 147\*170\*190cm (2 tons)

Settlement when gun is lifted, settlement when hanging gun, fixed amount filling, quantitative filling, amount rounding up, capacity rounding up  
IoT system, intelligent control, wireless networking, online data inquiry, remote control with mobile phones, viewing backend data, no need for personnel on duty, QR code and Card payment

### AdBlue Dispenser for Gas Station

#### Basic Type



Product range: 1.2 / 2 / 3 / 5 / 10 tons

Hose in 1.5m and out 5m, Power: 220V/230V, Max. flow rate: 3cbm/h

1960\*1550\*1197mm (1.2 tons)

2075\*14608\*1360mm (2 tons)

2330\*1550\*1755mm (3 tons)

2730\*1850\*2055mm (5 tons)

### AdBlue Dispenser for Gas Station

#### Automatic Heating Type



Product range: 2 / 3 / 5 / 10 tons Automatic Heating

Hose in 1.5m and out 5m, Power: 220V/230V, Max. flow rate: 3cbm/h

1500\*1550\*2000mm and 500\*650\*1400mm (2 tons)

1642\*1952\*2326mm and 350\*650\*1400mm (3 tons)

2730\*1850\*2055mm and 500\*650\*1400mm (5 tons)

Max. heating temp: 70C

Settlement when gun is lifted, settlement when hanging gun, fixed amount filling, quantitative filling, amount rounding up, capacity rounding up  
IoT system, intelligent control, wireless networking, online data inquiry, remote control with mobile phones, viewing backend data, no need for personnel on  
duty, QR code and Card payment

**AdBlue Dispenser for Gas Station**  
**Explosion-Proof**



Product range: 1.2 / 2 / 3 / 5 / 10 tons Explosion-Proof

Hose in 1.5m and out 5m, Power: 220V/230V, Max. flow rate: 3cbm/h, Explosion-proof level: Ex d e mb II B T4 GB  
1950\*1160\*2068mm (1.2 tons), 2410\*1060\*2440mm (2 tons), 2910\*1060\*2440mm (3 tons), 3910\*1060\*2440mm (5 tons)

Settlement when gun is lifted, settlement when hanging gun, fixed amount filling, quantitative filling, amount rounding up, capacity rounding up  
IoT system, intelligent control, wireless networking, online data inquiry, remote control with mobile phones, viewing backend data, no need for personnel on duty, QR code and Card payment





***SmartBlue<sup>®</sup>, We build the future together!***

*"We deliver not only your goods, but also your hopes and dreams!"*

<https://AdBlue.cn>